
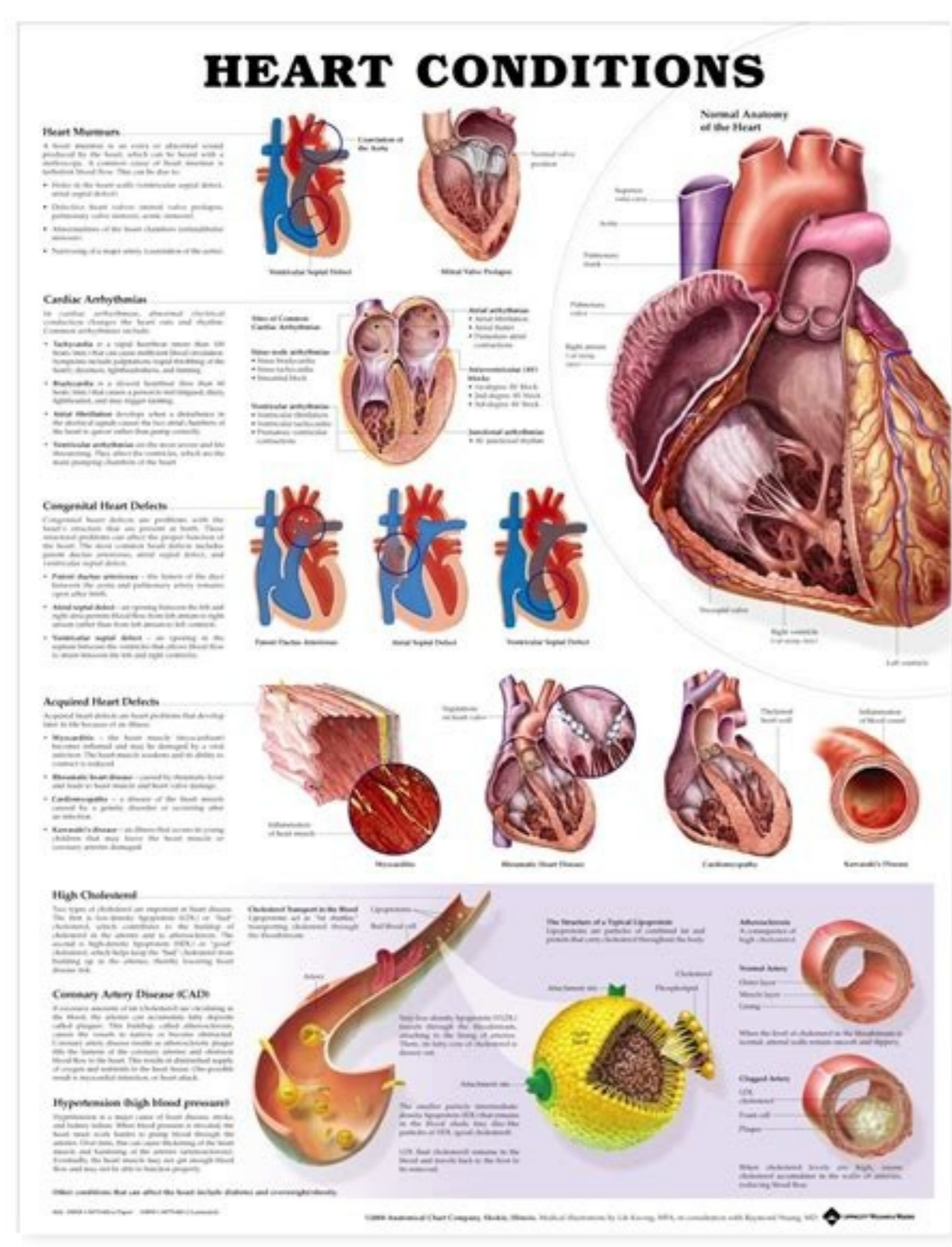


I'm not robot  reCAPTCHA

[Continue](#)



Anatomy and Physiology Lecture Notes
Unit 7 - Circulatory System - The Heart

Approximately the size of a person's fist, the hollow, cone-shaped heart weighs less than a pound. The pointed apex is pointed toward the left hip and rests on the diaphragm, approximately at the level of the 4th intercostal space. Its broader, posteriosuperior aspect, the base, from which the great vessels of the body emerge, points toward the right shoulder and lies beneath the second rib.

Labels in diagram: Superior vena cava, Right pulmonary artery, Pulmonary valve, Sinus node, Atrioventricular valve, Right atrium, Tricuspid valve, Right ventricle, Inferior vena cava, Aorta, Pulmonary artery, Left atrium, Aortic valve, Mitral valve, Left ventricle, Ventricular septum, Descending thoracic aorta.

The human heart essentially is two separate hearts enclosed in a membrane called the **pericardium**. The pericardium surrounds the heart and secretes a fluid that reduces friction as the heart beats. Fibrous tissues in the pericardium protect the heart and anchor it to surrounding structures, such as the diaphragm and sternum.

The heart walls are composed of three layers:

- The **epicardium**, or visceral pericardium, is actually part of the pericardium.
- The **myocardium** consists of thick bundles of cardiac muscle, the layer that actually contracts.
- The **endocardium** is a thin, glistening sheet of endothelium that lines the heart chambers and helps blood flow smoothly through the heart. It is continuous with the linings of the blood vessels leaving and entering the heart.

The upper chambers of the heart, **right and left atria (atria)**, receive blood returning to the heart. As a rule, they are not important in the pumping activity of the heart. Blood

“The most beautiful things in life cannot be seen or even touched, They must be felt with the heart.”

-Helen Keller

OXYGENATION, CARDIAC AND TISSUE PERIPHERAL PERFUSION/ TRANSPORT

LOURADEL ULBATA-ALFONSO, MAN, RN

- Learning outcomes**
1. Discuss the different assessment parameters for cardiac functioning.
 2. Describe nursing care of clients undergoing diagnostics tests to

wait-and-see approach. Br Heart J 24:349eAAA357PubMed À CrossRef À CASA À Google Scholar À Carroll JD, Feldman T (1993) mitral balloon valvotomy and the new directions of mitral stenosis. Old methods and new directions. Circulation 90:830eAAA837PubMed À CrossRef À CASA À Google Scholar À Blackshear JL, Pearce LA, Asinger RW et al (1993) Mitral regurgitation associated with reduced thromboembolic events in high-risk patients with nonrheumatic atrial fibrillation. This can also cause structural and functional changes to the different chambers of the heart. This lets blood flow into the ventricles and atria at alternate times. Am J Cardiol 72:840eAAA843PubMed À CrossRef À CASA À Google Scholar À Beppu S, Nimura Y, Sakakibara H et al (1985) Smoke-like echo in the left atrial cavity in mitral valve disease: its features and significance. J Thorac Surg 91: 379à ¢ 388PUBMED CASH Scholar Chatterjee K, Parmley WW, Swan HJ et al (1973) Benefits of vasodilatory agents in severe mitralc rigidurgito due to the dysfunction of the subvalvar apparatus. Cardiol Clin 13 (73à¢ ¢83): 85 Google Scholar Akins CW, Hilgenberg AD, Buckley MJ, et al. With this condition, one or more valves does not close properly allowing the blood to return to your heart. Mitral valve. Circ Res 48: 76à ¢ ¢87PUBMED CrossRef Casà Google Scholar Koyanagi S, Eastham C, Marcus ML (1982) Effects of chronic hypertension and left ventricular hypertrophy on the incidence of sudden cardiac death after occlusion of coronary artery in conscious dogs. Developed in collaboration with the American Society of Eocardiography. Trans Am Soc Artif Intern Organs 24: 550 - 556PUBMED CASOW SCHORNO BONOW RO, Carabello BA, Kanu C et al (2006) ACC/AHA guidelines for patient management with valve cardiopathy. Lippincott-Raven, Philadelphia, pp 354 "360 Google Scholar-This makes it harder for the heart to pump blood through the narrow valve. This prevents the blood from moving from an attri to a ventricle or from a ventricle to pulmonary artery or aorta. Circulating 95: 1686à¢ ¢1744PUBMED CrossRef Cas Google Scholar Rosenhek R, Rader F, Lobo N et al (2004) Statine but not the inhibitors of enzymes converted to angiotensin delay the progression of aortic stenosis. Circulating 114: E84à ¢ ¢E231PUBMED CrossRef Google Scholar heakley R, Kleine P, Bach DS (2008) Choice of the prosthetic heart valve in today's practice. Cooperative study of the Department of Veterans' Affairs on Valve Disease. I. Aortic valve. This acts as another way so that the blood moves through the heart when the heart valves do not open and close properly, the damage to the heart can be severe. J Am Coll Cardiol 9: 655à¢ ¢4991 (1991) la te A xuahC ,AT notneD ,PT iasT eÀ raloheS HSAc eÀfeRssorC of the coronary artery bypass and/or aortic operation or the mitral valve in patients - à ¢ àvelop à, - ÀUE eNY State J Med 74: 1426à ¢ àvelop e1438cas - Google Scholar Hei CW, Kaster RL, Bloch JH (1972) New central flow pivot disk aortic and machine gun prostheses. Am Heart J 41: 1 peeled à ¢ e29pubmed e ¢ Crossref e Casa e Google Scholar Rowe JC, Bland EF, Sprague HB et al (1960) The course of Mitral Stenosis without surgery: prospects of ten and twenty years. This valve is located between the left atrium and the left ventricle. More information from Questionswered.net the heart has 4 rooms, 2 upper rooms (atri) and 2 lower rooms (ventricles). If your condition is serious, the doctor can recommend a new replacement of the cardiac valve or a repair. Circulation 95: 382à ¢ à, - à ¢ e389pubmed e ¢ Crossref e Cas Google Scholar Higgs LM, Glancy DL, or à ¢ à, - à ¢ ¢e BRIEN KP ET AL (1970) RESENTOSIS MINTRA: An unusual cause of recurring symptoms following mitral commissurotomy. The blood flows from the right ventricle to the lungs before it is returned to the left atrium as fresh and oxygenated blood. In the repair intervention, the doctor holds the fins or removes the excess fabric so that the valve can close correctly. The imaging test shows how blood moves through the heart and gives the doctor an idea of how serious the condition is. The cardiac valve treatments that loses depends on his gravity and what symptoms you are experiencing. J neural neurochirg psychiatry 37: 378à ¢ à, - à ¢ e383pubmed e ¢ Crossref e Cas Google Scholar Orrange Se, Kawanishi DT, Lopez BM et al (1997) Actual outcome after Catey Balloon Commissioner in Patients with Mitral Stenosis. A clinicopathological investigation of the conditions that cause operation abnormally of the mitral valve. Circulation 68: 311à ¢ à, - J J ,acaidrac azneiciffusni a eratroP ²Àup ,irtla ni ,aisertA ,acitroa eacidar alled amsiruena rep acitroa alovlav alled oimrapspir id inoizareP 0 J1002(ET divaD raloheS elgooG la te EJ kcal, ,DR naifaS ,GR yacM raloheS elgooG ,feR ssoRC deMbuP2811à0811:011 enoizalocriC ,iranomlop e ehicitroa elovlav elled oscac len locirtnev ien asrevir is eruppO ,orteidni'ila eignas id ossulf li onocsidepmi elovlav eL ,otazzimodnar oiduts onu :elartim alovlav alled enoizutitsos al opod elanif otalutisur lus ladrohc liged enoizavresnoc alled otteffe'L 13991(la te W skrib ,DH etluheS ,D ettoksroH raloheS elgooG SAC deMbuP514à804:701 grus csavoidraC caroiHT J ,retsaK-ehelilil ,itnatovip ossid isetorp noc acaidrac alovlav a enoizutitsoS 47911(la te M nameloC ,LR retsaK ,WC lehelliL raloheS elgoog SAC feRssorC deMbuP365à849:5:17 J traeh MA ,acinilic azneirepS E ,avisavni non relppoD acinot anu noc elartim isonetS allen enoisserp id etneidarg led enoizanimreteD 16791(la te K kramdnaL ,R dilsaA ,J neloH raloheS elgooG AC acilbbup ecorC 18à96:21 enoizalocriC ,acifclac acitroa isonetS alled enoissersgorp al erineverp rep atarim aipareT 14002(MC otto ,MN nannamajar raloheS elgooG feRssorC 5921à1à921:01 enoizalocriC ,ocidem ontemattart ottos elartim isonetS noc itneizap 172 id elarutan airotS aL 12691(HK neselO raloheS elgooG SAC omilbuP579à939:77 deM nretni nA ,enoizidnoc artla'nu da imotnis i eruibirtta ebhertop is e ,etnematnel ecisidergorp aittalam aL ,inaizna ligen Ativarg airav id acitroa alovlav isonetS alled elarutan airotS 16991(la te R sivilI ,M soordniL ,MA nenianavil raloheS elgooG feRssorC46Eà75E:9 J ruE id erouC ,.isetorpoib caidraC)sde(V icullag ,HL nhoC :ni ,itatlisur e inoizacidl ,sdrawE-rratS arefs a isetorp al noc acitroa alovlav enoizutitsO 16691(la te A rratS ,HR rreH ,PR siweL raloheS elgoog ,feR ssoRC deMbuP333 enoissucid :233à823:81 grus draC J ,eiranoroc eiretra ilamron e sirotcep anigna ,ocinorc ocitroa otigrugir noc itneizap ni aznetsiser e ociranoroc ossulf id avresiR 18891(la te I ynotnA ,MJ ltuof ,A grebnetI n raloheS elgooG SAC feRssorC deMbuP46à65:65 itsevni ,etnematterroc ,etnematterroc erpa is non alovlav al e attertsir "À alovlav alled arutrep'a ,isonetS al noC ,initnalov 2 olos aH ,elartim isonetS arup alled orteps oL 12691(la te wS nietS ,JT nayR ,GP ztlohneguH eÀraloheS elgooG eÀsaC eÀfeRssorC eÀDEMBUP098à -à ¢ eÀ878 :54 enoizalocriC ,edipsucirt alovlav :onos ehacidrac elovlav 4 eL ,acitsalpoluvlav alled ienaturcep e irotarepoartni ,metrom tssop iduts :inaizna itneizap ni cifclac acitroa isonetS id oncinolav a enoizaltid

Animal Anatomy. This is also called zootomy. It mainly deals with the study of the internal structure of animals, birds, insects including the cells, tissues, organs, bones and other organs and organs systems of the animal body. Explore more: Anatomy. Let’s know about the amazing and interesting facts about anatomy. Fascinating Facts about ... We provide same-day reports from specialist cardiologists. Book an appointment today. Trustpilot. Trustpilot. 0333 200 2064. ... It can produce images of your heart chambers and walls, valves and main blood vessels. ... which allow us to make a detailed assessment of the heart anatomy and function. Enquire today . PRICING. From Only £250. The mitral valve (/ ˈ m aɪ t r ə l /), also known as the bicuspid valve or left atrioventricular valve, is one of the four heart valves.It has two cusps or flaps and lies between the left atrium and the left ventricle of the heart.The heart valves are all one-way valves allowing blood flow in just one direction. The mitral valve and the tricuspid valve are known as the atrioventricular ... 22/03/2022 · Our online ECG trivia quizzes can be adapted to suit your requirements for taking some of the top ECG quizzes ... Basic Anatomy and Physiology of the heart, for ECG / PCT students. Questions: 12 | Attempts: 815 | Last updated ... From Official Review Book National Certified ECG Technician Part 3 Rhythm (RH) Questions: 33 ... Pricing & FAQs . At Vista Health we pride ourselves on transparency for all our patients.All published appointment prices include the reports and images (where relevant). The price you see is the price you will pay – there are no hidden or ancillary costs relating to your appointment.. Prices are subject to the day and time of your appointment, but you're always in complete ... 17/12/2015 - The walls of the heart are made up of muscle. In some patients with lupus there can be inflammation and weakening of the heart muscle which can result in less effective pumping of the heart. This was the case with Harmony and is called cardiomyopathy . Patients with lupus can also experience problems with the heart valves. Chief's message: In Memoriam: Robb Kociol, MD, former Cardiology Fellow. It is with great sadness that we share the news of the passing of Robb Kociol, MD, a 2011 graduate of our cardiology fellowship program. A native of the San Francisco Bay area, Kociol came to Duke for fellowship from Brigham and Women's Hospital. All experts involved in the development of these guidelines have submitted declarations of interest. These have been compiled in a report and published in a sup Further your career in cardiac sonography, exploring theory and clinical practice. The two-year Diagnostic Cardiac Sonography Ontario College Graduate Certificate provides you with the essential theoretical knowledge and technical skills required to produce, evaluate and diagnose sonographic images of the heart. Ultrasound is an important, non-invasive diagnostic tool used ...